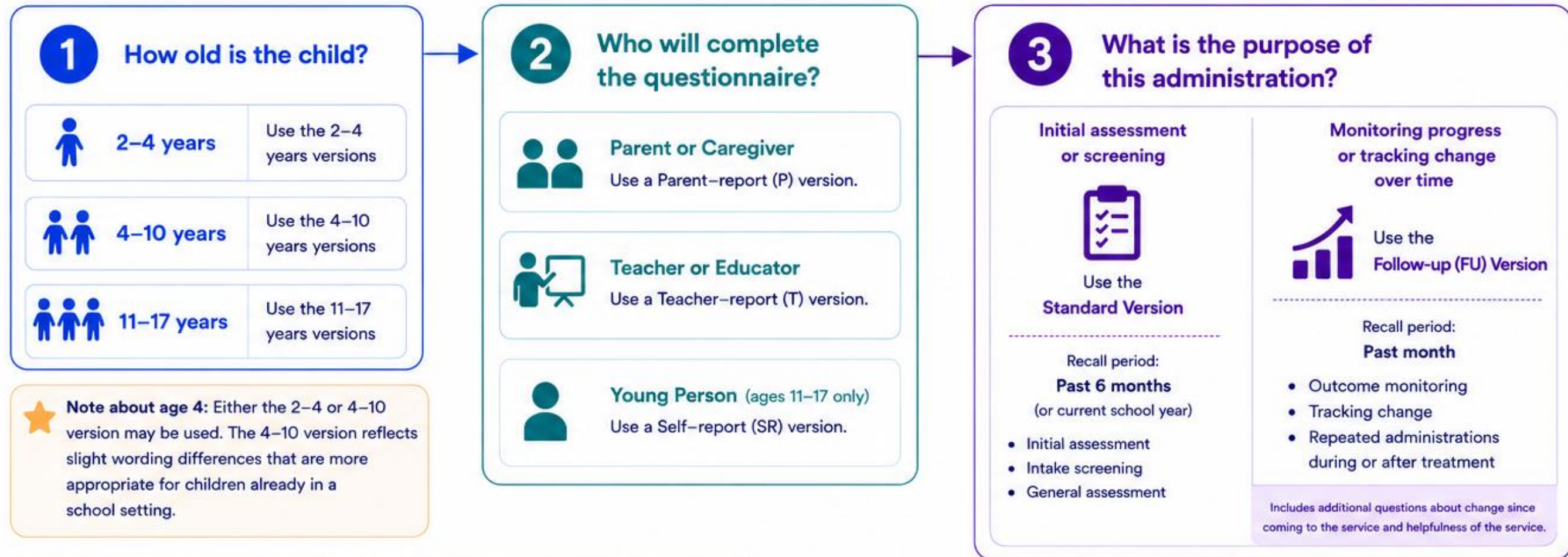


Which SDQ Version Should I Use?

A quick, 3-step guide to help you select the right SDQ for your client.



YOUR SDQ VERSION			
Respondent (Who will complete the questionnaire?)	Child's Age		
	2–4 years	4–10 years	11–17 years
Parent or Caregiver (P)	SDQ P2–4	SDQ P4–10	SDQ P11–17
Teacher or Educator (T)	SDQ T2–4	SDQ T4–10	SDQ T11–17
Young Person (Self-report) (SR)	—	—	SDQ SR11–17

i Add "FU" to the end of the version name if using the Follow-up version.
Examples: SDQ P4–10 FU | SDQ T11–17 FU | SDQ SR11–17 FU

USING MULTIPLE RESPONDENTS

The SDQ is designed to support multi-informant assessment.

Collect ratings from parents, teachers, and (when age appropriate) young people to get a more complete picture of the child or young person's strengths and difficulties.

Multi-informant data can be combined in NovoPsych reports to support comprehensive clinical insights.

FOR DETAILED INFORMATION ABOUT THE SDQ

Click here to read the full NovoPsych profile.

[View SDQ Profile](#)

SEND ASSESSMENTS TO INFORMANTS

Learn how to send parent, teacher, or informant rated assessments.

[View Help Article](#)

KEY POINTS

- All SDQ versions contain the same 25 items (5 scales).
- Choose the age band and respondent that best fit your client.
- Use **Standard** for initial assessment; **Follow-up (FU)** for progress monitoring.
- Young person (self-report) is available for ages 11–17 only.